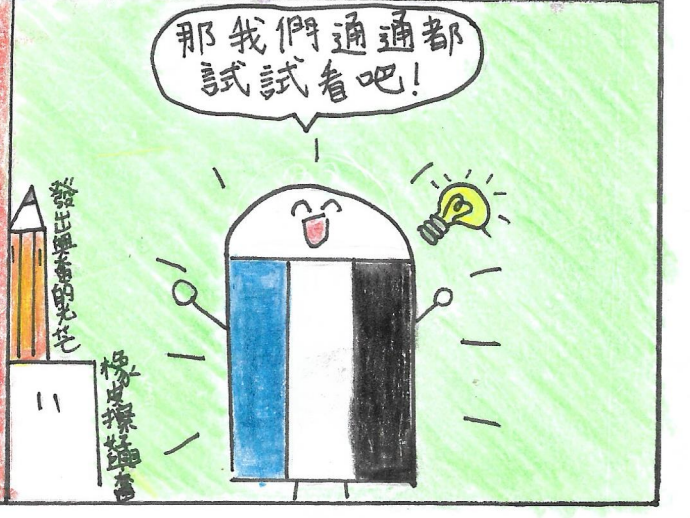
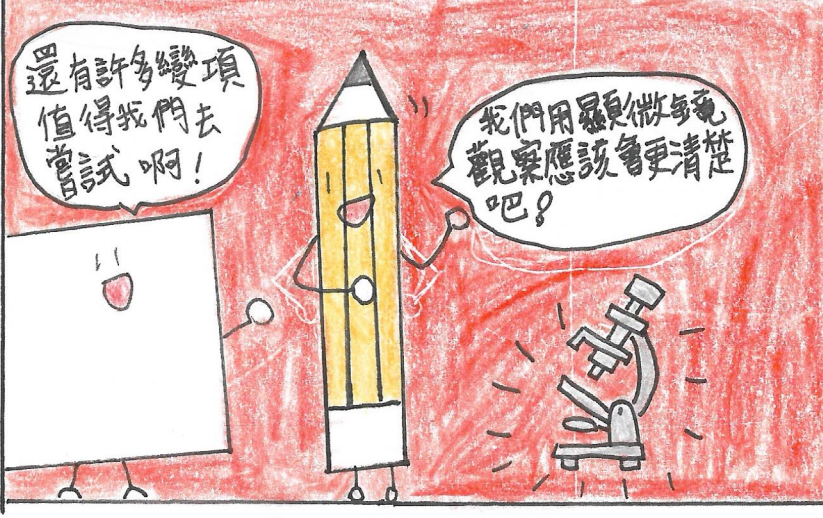
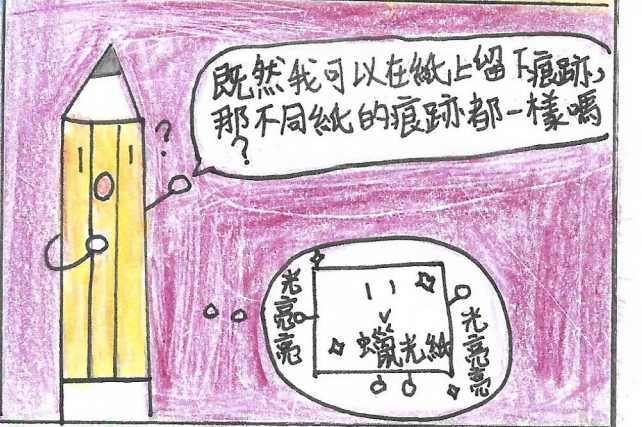
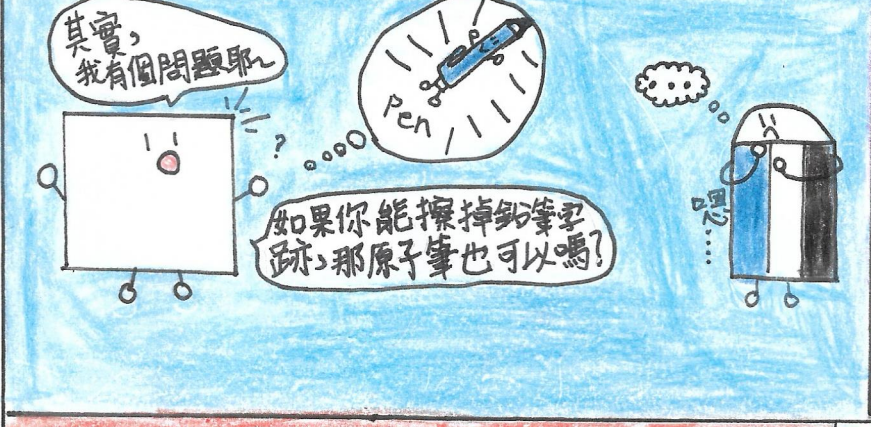
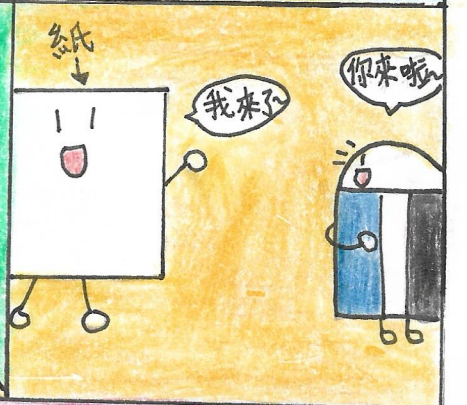
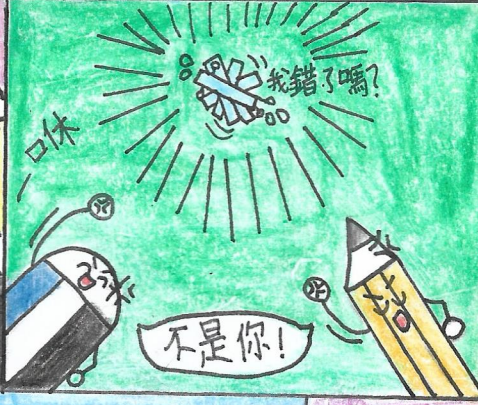
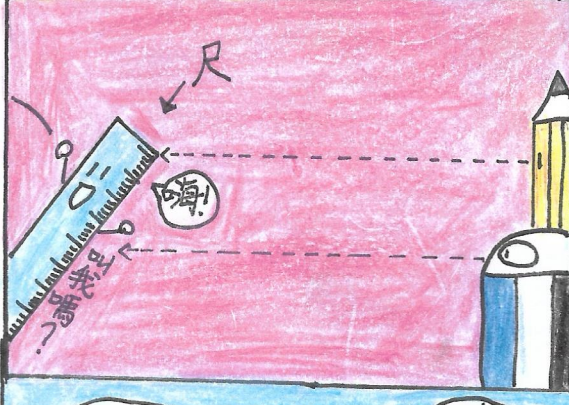
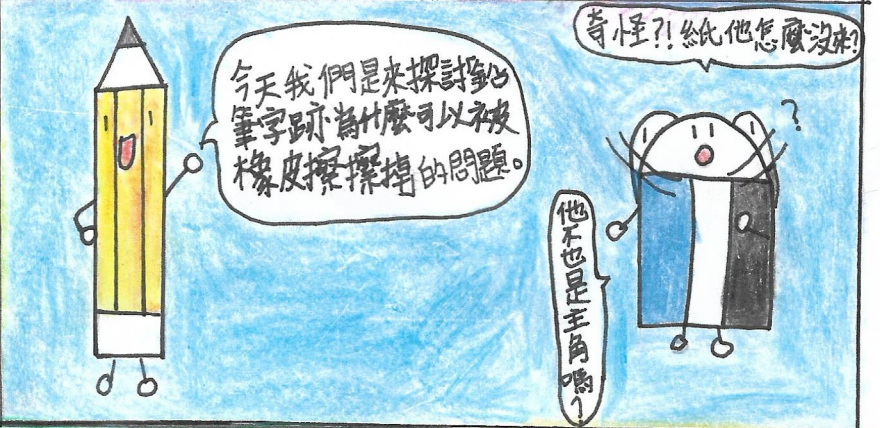
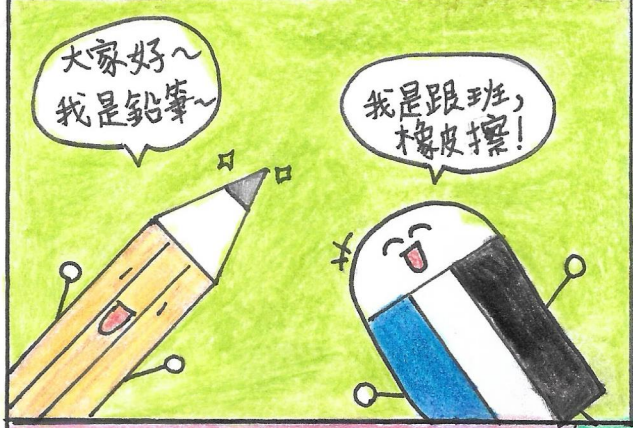


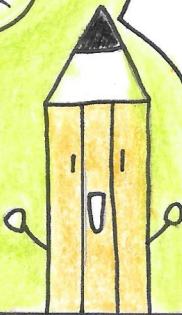
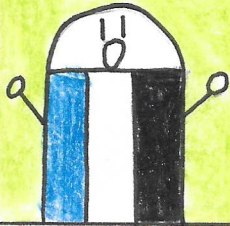
橡皮擦 VS 鉛筆



實驗馬鈴



第1個是對照組的鉛筆和橡皮擦。



需要的材料有：

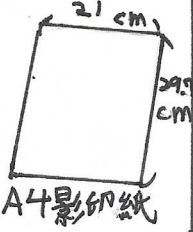
筆電



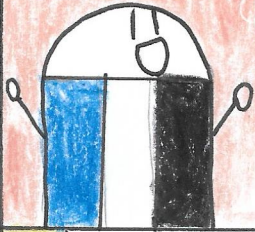
顯微鏡



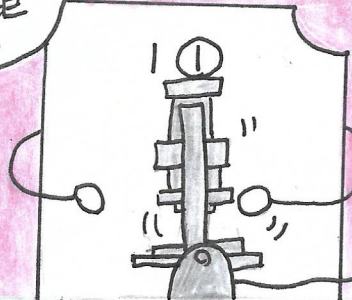
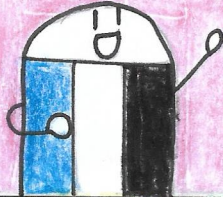
HB鉛筆



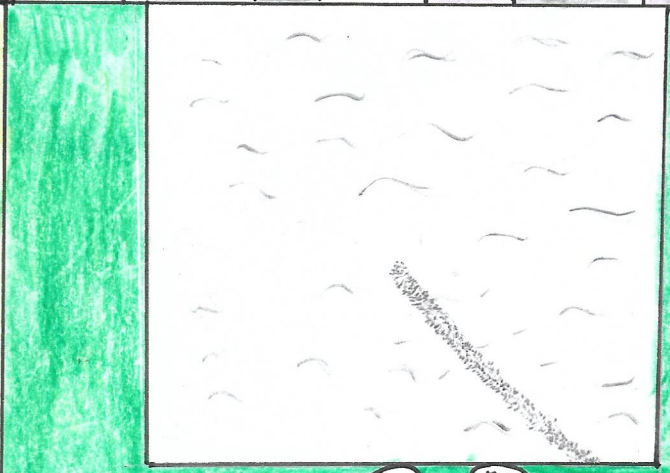
首先將紙放在顯微鏡下，



接下來把顯微鏡調到正確的焦距並連上電腦。

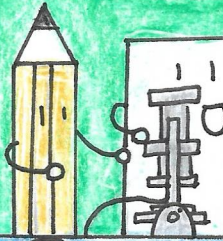
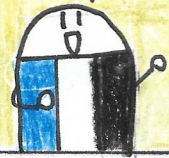
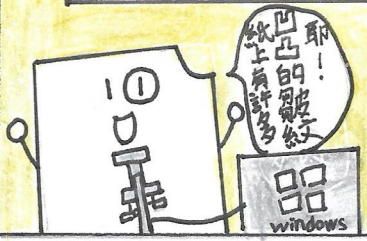


電腦畫面



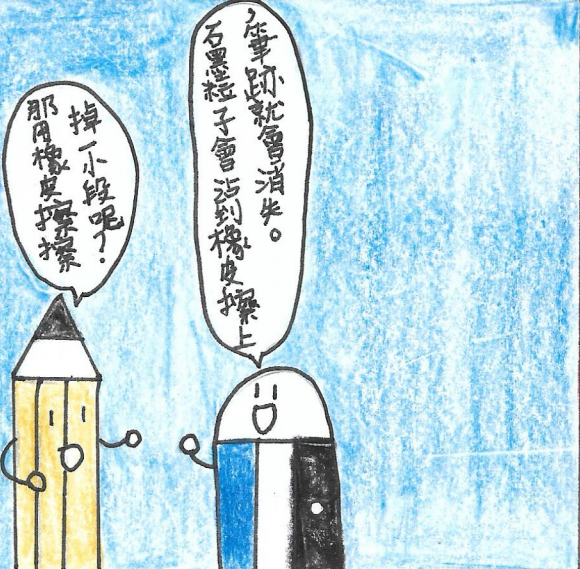
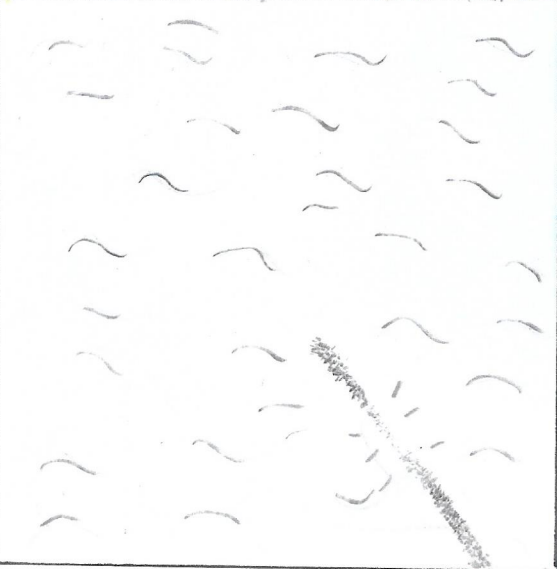
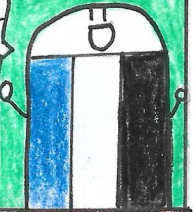
耶！凹凹的紋紋！紙上有許多

接下來用鉛筆在上面畫一橫。



有一排多且直線

沒錯！那就是直線



實驗馬鈴

2



