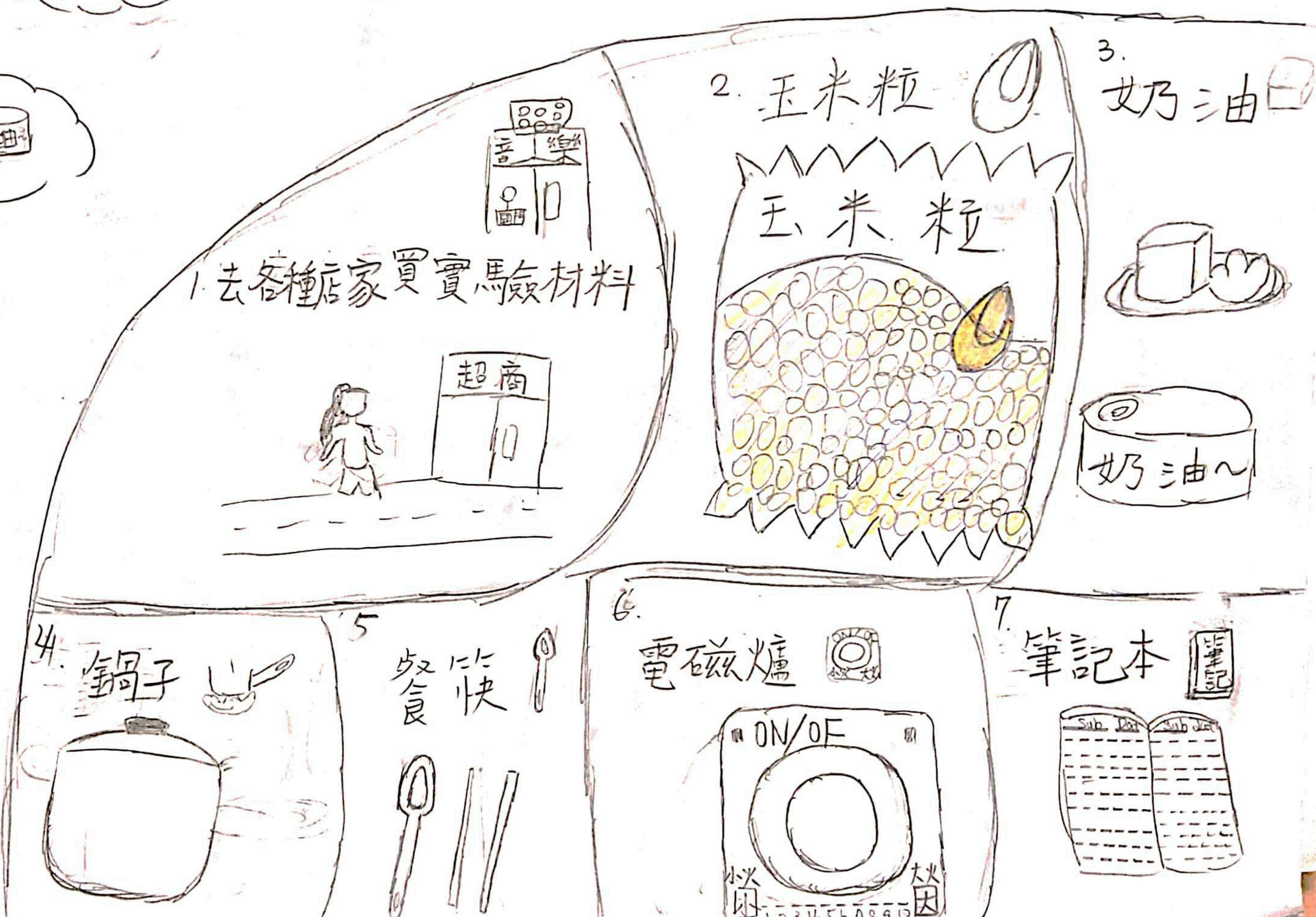


老少咸宜好吃



— 探討爆米花軟硬度 —

# 實驗材料

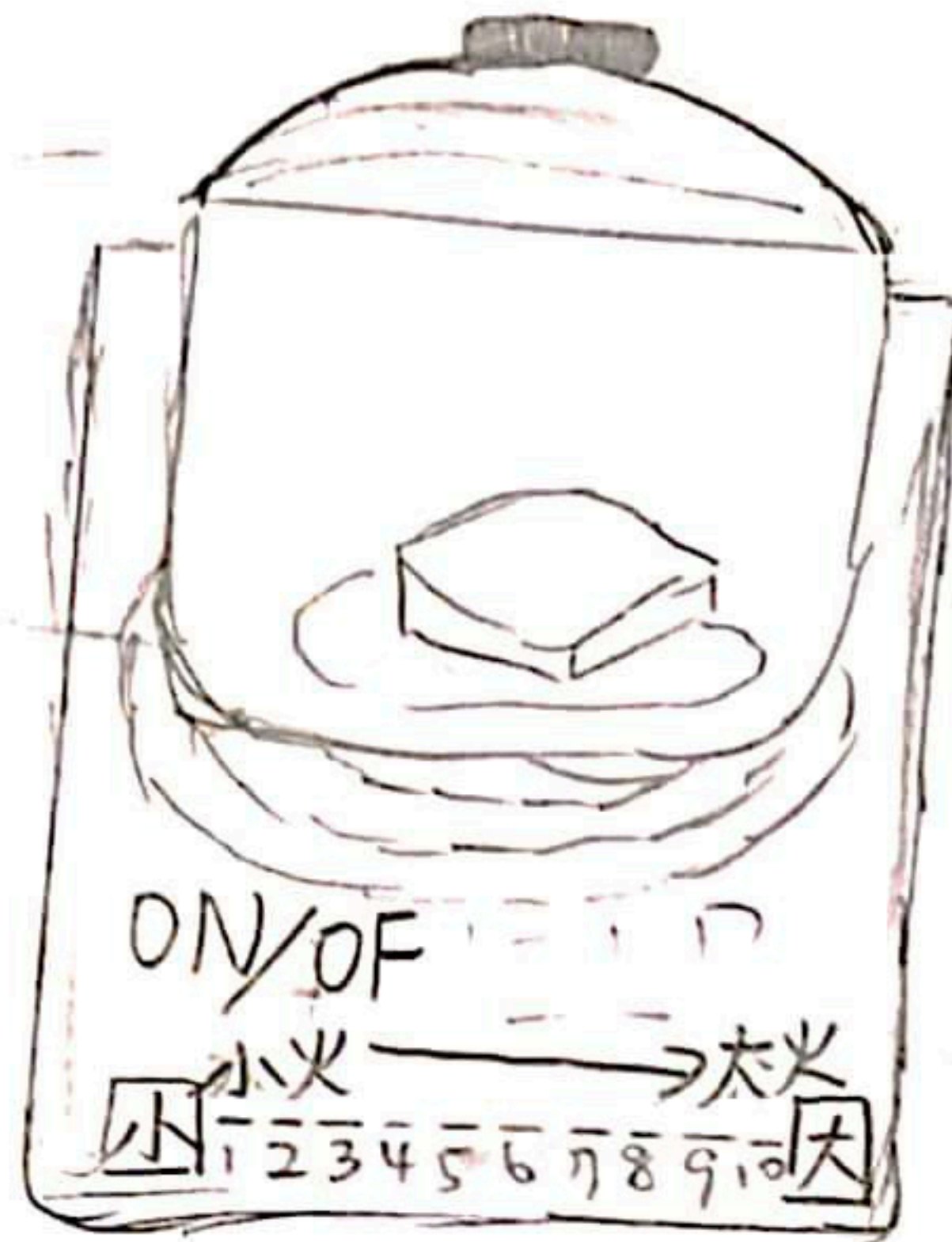


# 實驗過程

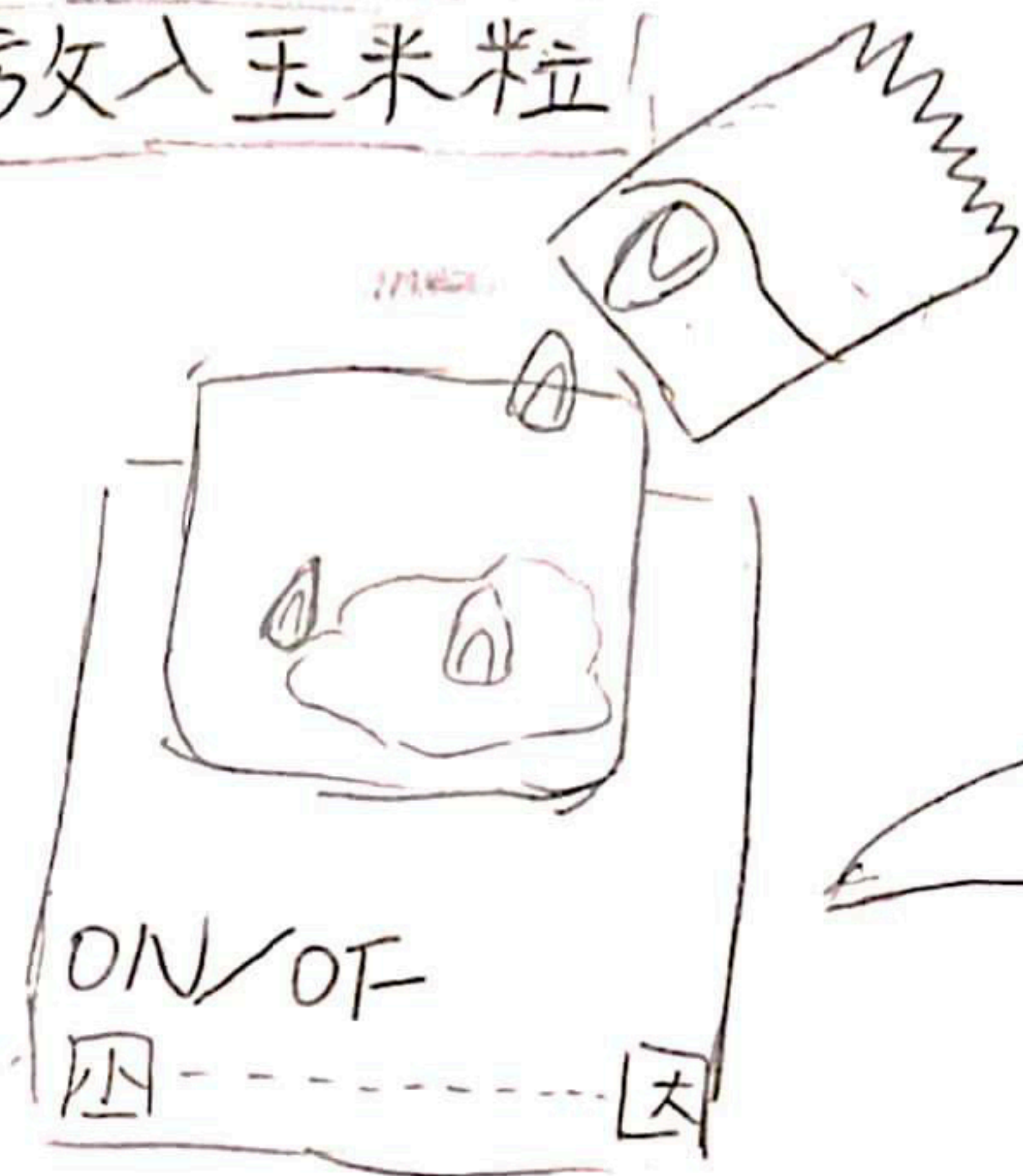
把奶油放進鍋子



將鍋子放在電磁爐



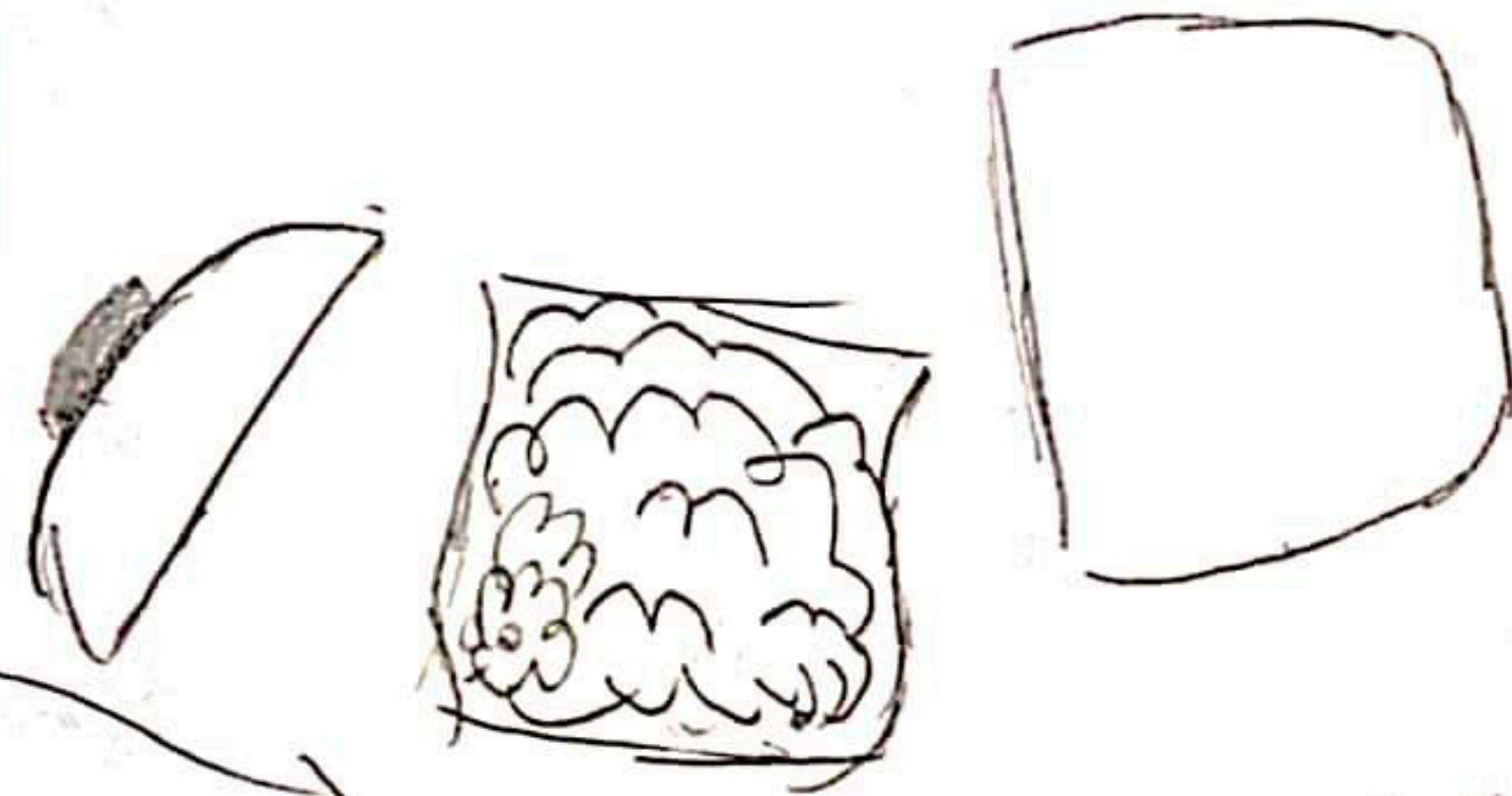
放入玉米粒



等待爆米花出爐



爆米花  
爆好了

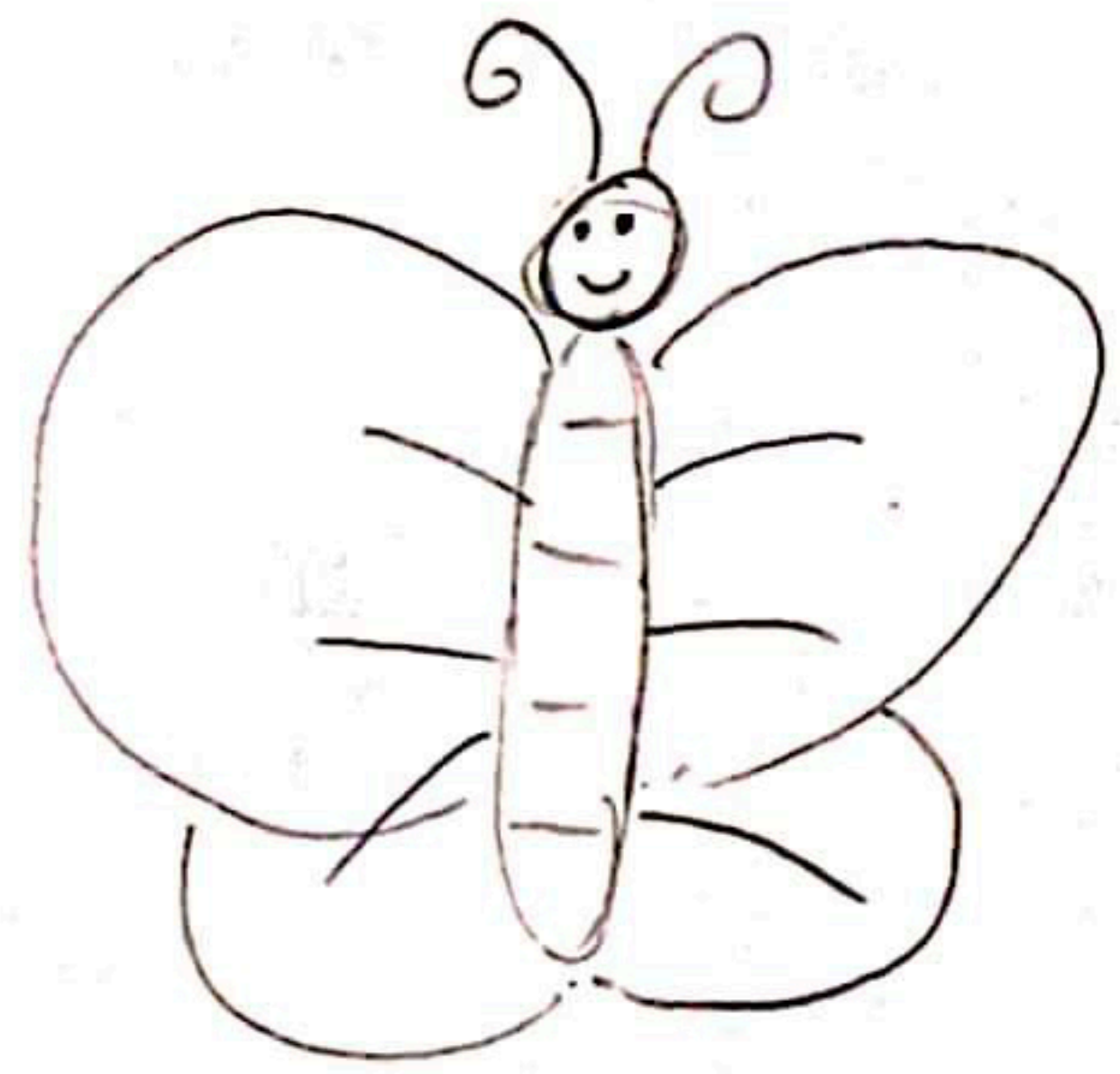


# 實驗結果

我們發現用電磁爐爆米花

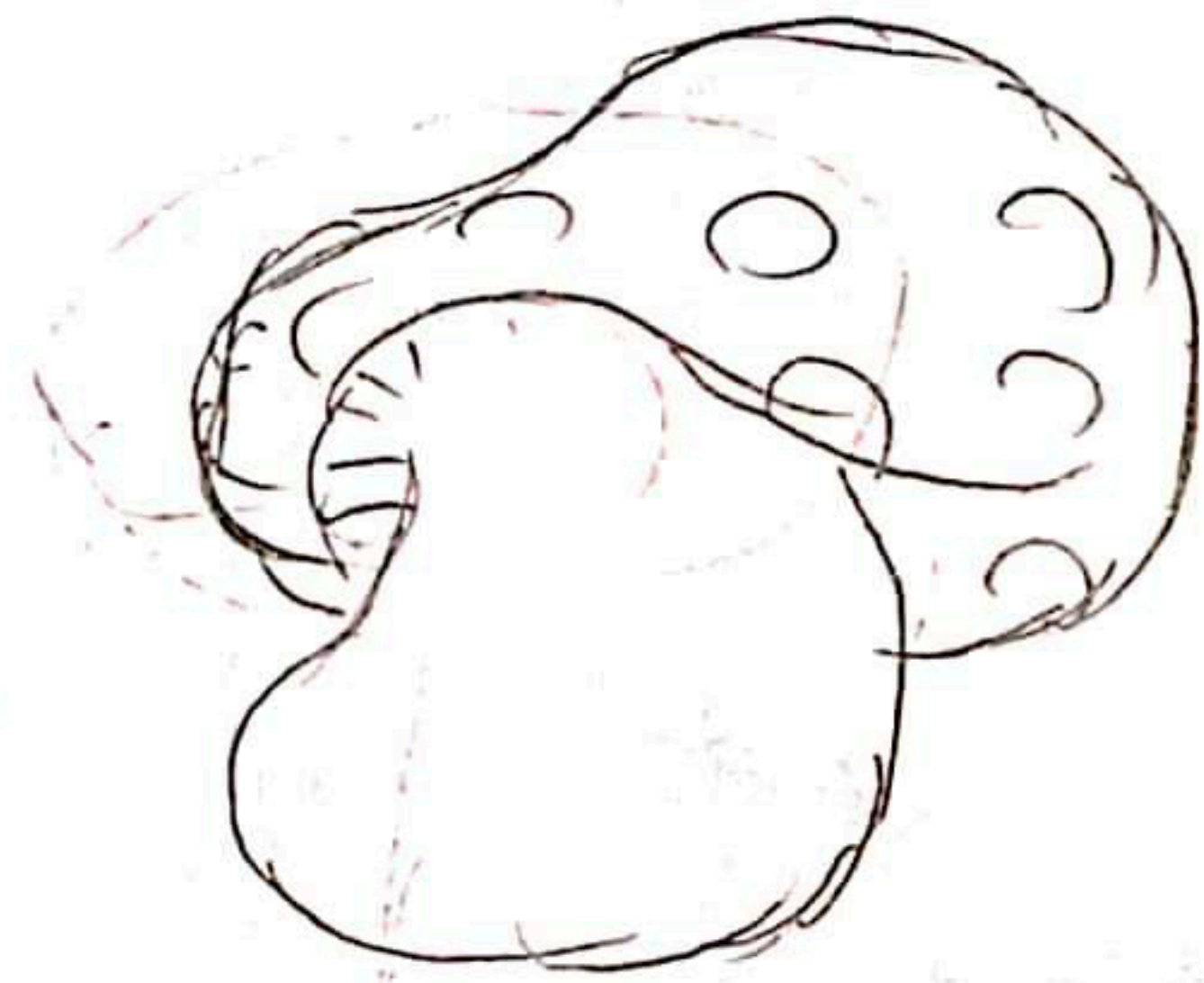
請看下去會有更精彩的實驗喔!!!

大部分都是



狀

只有一些是



狀